

Traffic Fatalities by STATE

<http://www.fars.nhtsa.dot.gov/States/StatesCrashesAndAllVictims.aspx>

State	2014	2013	2012	2011	2010	2009	2008	2007	2006	2005
Alabama	820	853	865	895	862	848	969	1110	1207	1148
Alaska	73	51	59	72	56	64	62	82	74	73
Arizona	770	849	821	826	759	806	938	1071	1293	1179
Arkansas	466	498	560	551	571	596	600	649	665	654
California	3074	3107	2966	2816	2720	3090	3434	3995	4240	4333
Colorado	488	482	474	447	450	465	548	554	535	606
Connecticut	248	286	264	221	320	224	302	296	311	278
Delaware	121	99	114	99	101	116	121	117	148	133
District of Columbia	23	20	15	27	24	29	34	44	37	48
Florida	2494	2403	2431	2400	2444	2560	2980	3213	3357	3518
Georgia	1164	1180	1192	1226	1247	1292	1495	1641	1693	1729
Hawaii	95	102	125	100	113	109	107	138	161	140
Idaho	186	214	184	167	209	226	232	252	267	275
Illinois	924	991	956	918	927	911	1043	1248	1254	1363
Indiana	746	784	781	751	754	693	820	898	902	938
Iowa	321	317	365	360	390	371	412	446	439	450
Kansas	385	350	405	386	431	386	384	416	468	428
Kentucky	672	638	746	720	760	791	825	864	913	985
Louisiana	737	703	723	680	721	824	916	993	987	963
Maine	131	144	164	136	161	159	155	183	188	169
Maryland	442	465	511	485	496	549	591	614	652	614
Massachusetts	328	351	383	374	347	340	364	434	429	441
Michigan	901	947	940	889	942	872	980	1087	1086	1129
Minnesota	361	387	395	368	411	421	455	510	494	559
Mississippi	607	613	582	630	641	700	783	884	911	931
Missouri	766	757	826	786	821	878	960	992	1096	1257
Montana	192	229	205	209	189	221	229	277	264	251
Nebraska	225	211	212	181	190	223	208	256	269	276
Nevada	290	266	261	246	257	243	324	373	431	427
New Hampshire	95	135	108	90	128	110	138	129	127	166
New Jersey	556	542	589	627	556	584	590	724	771	747
New Mexico	383	311	366	350	349	361	366	413	484	488
New York	1039	1202	1180	1171	1201	1158	1238	1332	1454	1434
North Carolina	1284	1290	1299	1230	1320	1313	1428	1676	1554	1547
North Dakota	135	148	170	148	105	140	104	111	111	123
Ohio	1006	989	1121	1017	1080	1022	1191	1255	1238	1321
Oklahoma	669	678	709	696	668	737	750	766	765	803
Oregon	357	313	337	331	317	377	416	455	478	487
Pennsylvania	1195	1210	1310	1286	1324	1256	1468	1491	1525	1616
Rhode Island	52	65	64	66	67	83	65	69	81	87
South Carolina	824	768	863	828	809	894	921	1077	1045	1094

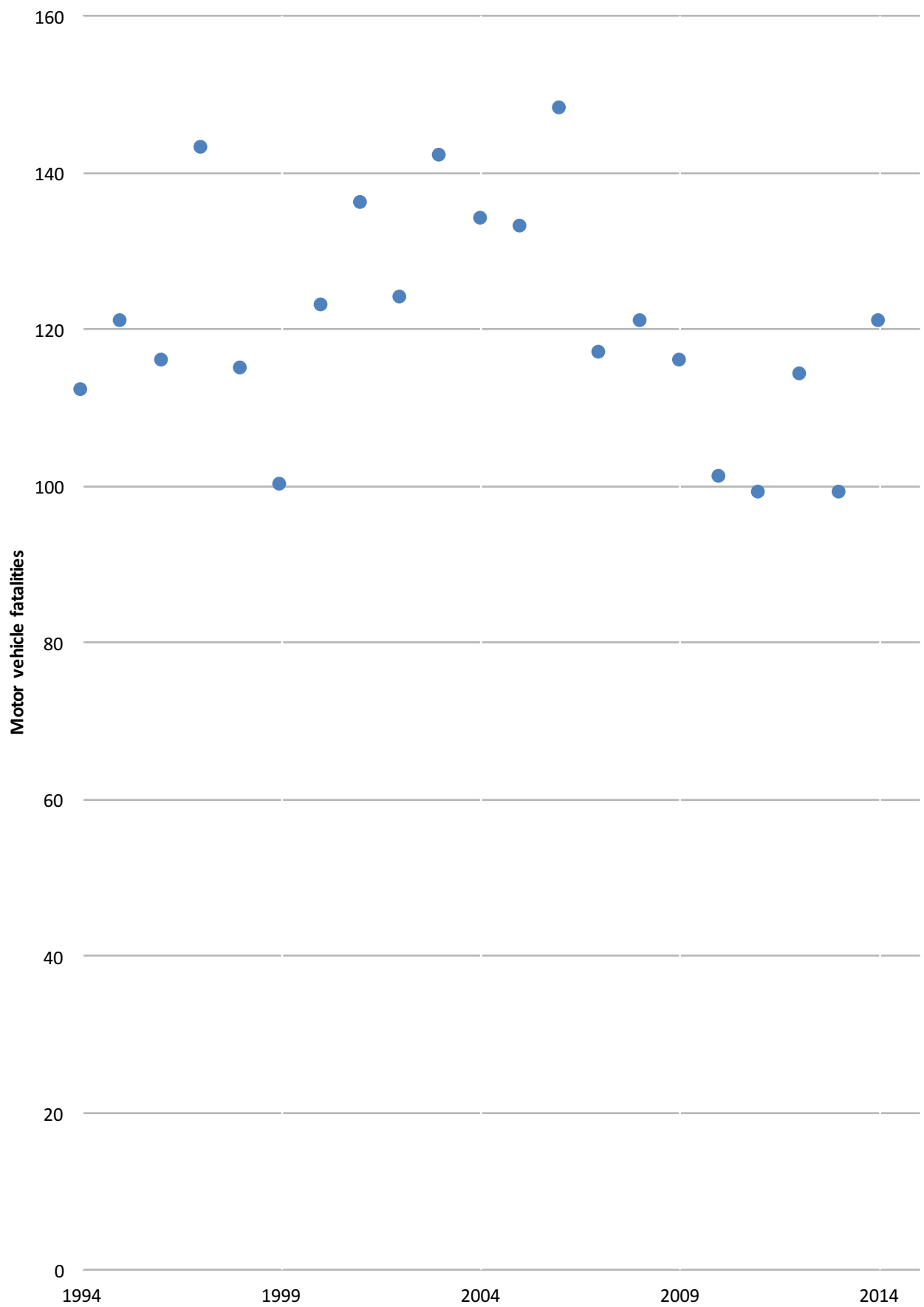
South Dakota	136	135	133	111	140	131	121	146	191	186
Tennessee	962	995	1015	937	1032	986	1043	1211	1284	1270
Texas	3538	3389	3408	3054	3023	3104	3476	3466	3531	3536
Utah	256	220	217	243	253	244	276	299	287	282
Vermont	44	69	77	55	71	74	73	66	87	73
Virginia	703	740	776	764	740	758	825	1027	962	947
Washington	462	436	438	454	460	492	521	571	633	649
West Virginia	272	332	339	338	315	357	378	432	410	374
Wisconsin	507	543	615	582	572	561	605	756	724	815
Wyoming	150	87	123	135	155	134	159	150	195	170
USA	32675	32894	33782	32479	32999	33883	37423	41259	42708	43510

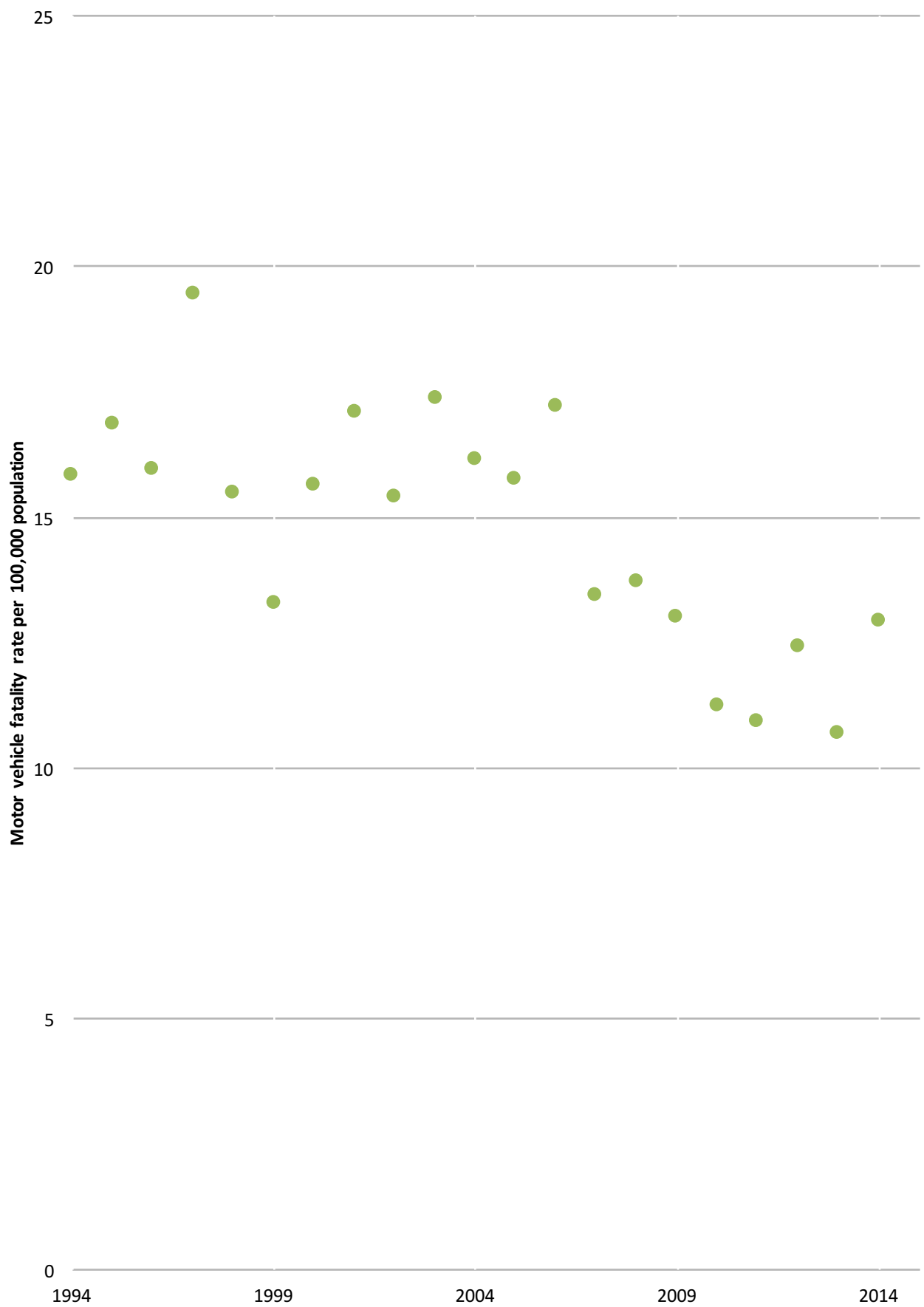
Fatalities and Fatality Rates, 1994 - 2014 - State: Delaware

<http://www.fars.nhtsa.dot.gov/Trends/TrendsGeneral.aspx>

Year	Fatalities	Resident Population (Thousands)	Fatality Rate per 100,000 Population	Licensed Drivers (Thousands)
1994	112	708	15.81	513
1995	121	718	16.85	525
1996	116	727	15.95	529
1997	143	735	19.46	536
1998	115	744	15.46	546
1999	100	754	13.27	552
2000	123	786	15.64	557
2001	136	796	17.09	564
2002	124	806	15.38	573
2003	142	818	17.36	585
2004	134	831	16.13	534
2005	133	845	15.74	610
2006	148	859	17.22	620
2007	117	872	13.42	624
2008	121	884	13.69	652
2009	116	892	13.01	700
2010	101	900	11.23	695
2011	99	908	10.91	716
2012	114	917	12.43	720
2013	99	925	10.7	724
2014	121	936	12.93	732

Fatality Rate per 100,000 Licensed Drivers	Registered Motor Vehicles (Thousands)	Fatality Rate per 100,000 Registered Vehicles	Vehicle Miles Traveled (Billions)	Fatality Rate per 100 Million VMT
21.82	587	19.08	7	1.59
23.05	601	20.13	8	1.61
21.92	616	18.84	8	1.51
26.69	624	22.93	8	1.79
21.07	627	18.35	8	1.4
18.12	626	15.97	8	1.18
22.09	641	19.18	8	1.49
24.11	666	20.43	9	1.58
21.64	688	18.02	9	1.4
24.27	702	20.23	9	1.57
25.1	729	18.39	9	1.44
21.79	756	17.6	10	1.4
23.88	836	17.7	9	1.57
18.74	875	13.38	9	1.23
18.56	892	13.56	9	1.35
16.58	869	13.35	9	1.28
14.53	826	12.23	9	1.13
13.82	929	10.65	9	1.1
15.83	944	12.08	9	1.24
13.68	947	10.45	9	1.06
16.52	958	12.63	10	1.26





Persons Killed, by Person Type and Vehicle Type, 1994 - 2014 - State: Delaware
<http://www.fars.nhtsa.dot.gov/Trends/TrendsGeneral.aspx>

Occupants by Vehicle Type

Year	Passenger Cars	Light Trucks	Large Trucks	Motorcycles	Buses	
1994	64	18	1		6	0
1995	65	18	0		6	0
1996	61	17	1		10	0
1997	93	22	3		8	0
1998	67	21	2		6	0
1999	54	23	1		7	0
2000	70	22	1		5	0
2001	79	27	0		10	0
2002	64	31	2		7	0
2003	81	29	0		11	0
2004	77	28	1		8	0
2005	68	27	2		21	0
2006	67	37	1		12	0
2007	54	29	0		16	0
2008	42	36	0		16	0
2009	46	35	0		14	0
2010	41	26	0		8	0
2011	44	17	0		19	0
2012	43	18	3		17	0
2013	30	20	2		20	1
2014	44	27	4		15	3

Non-motorcycle MV occupants

2013 33

Person Type

Nonmotorists

Other/ Unknown	Total	Year	Pedestrian	Pedalcyclist	Other	Total	Year
0	83	1994	18	5	0	23	1994
2	85	1995	29	1	0	30	1995
4	83	1996	20	3	0	23	1996
0	118	1997	14	3	0	17	1997
1	91	1998	15	3	0	18	1998
1	79	1999	12	1	1	14	1999
0	93	2000	22	3	0	25	2000
0	106	2001	17	2	1	20	2001
0	97	2002	16	4	0	20	2002
1	111	2003	19	1	0	20	2003
1	107	2004	16	3	0	19	2004
2	99	2005	11	2	0	13	2005
0	105	2006	27	4	0	31	2006
1	84	2007	16	0	1	17	2007
0	78	2008	21	6	0	27	2008
0	81	2009	15	6	0	21	2009
1	68	2010	22	3	0	25	2010
0	61	2011	18	0	1	19	2011
0	64	2012	27	4	2	33	2012
0	53	2013	25	1	0	26	2013
0	78	2014	25	3	0	28	2014

Total

112

121

116

143

115

100

123

136

124

142

134

133

148

117

121

116

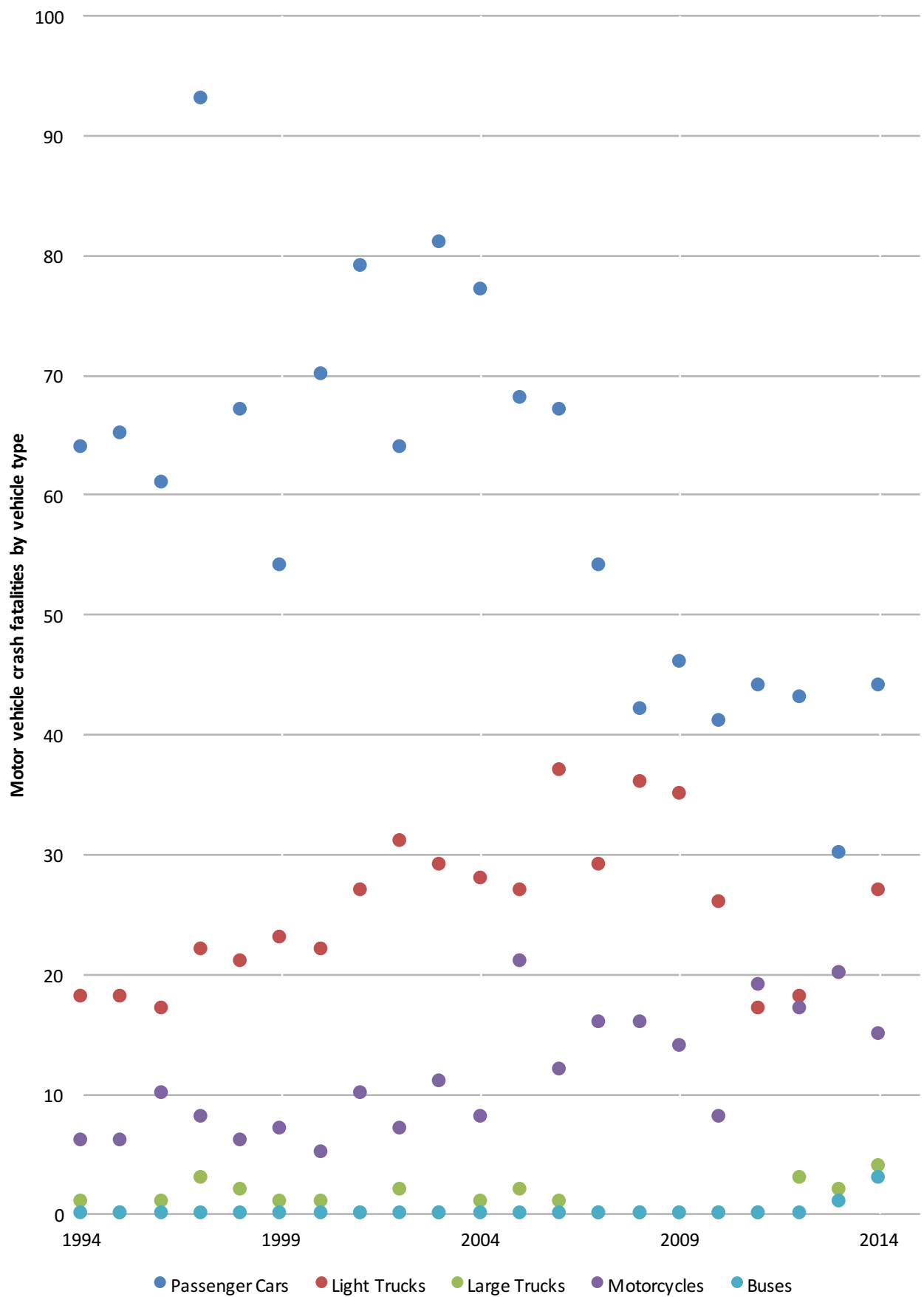
101

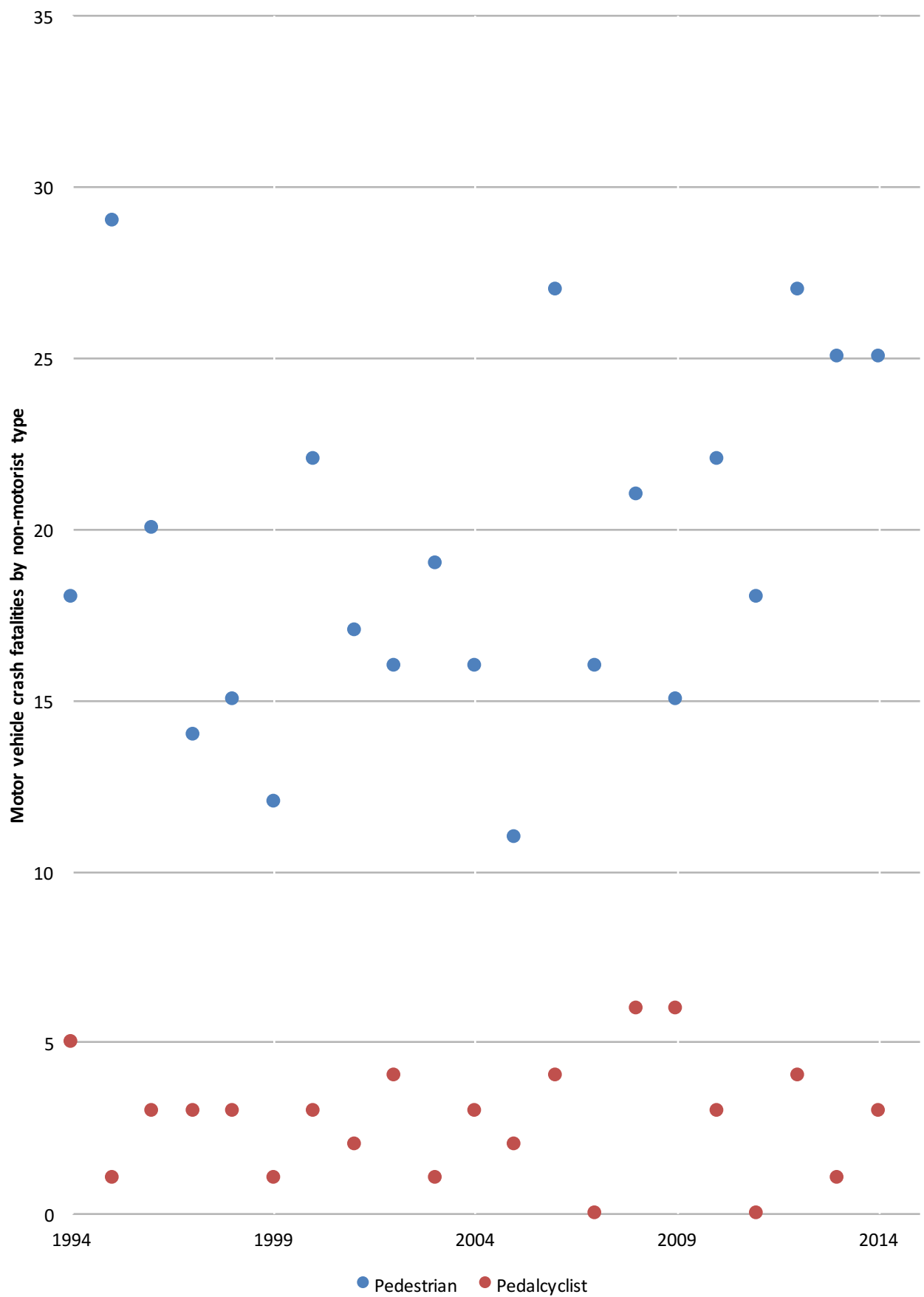
99

114

99

121



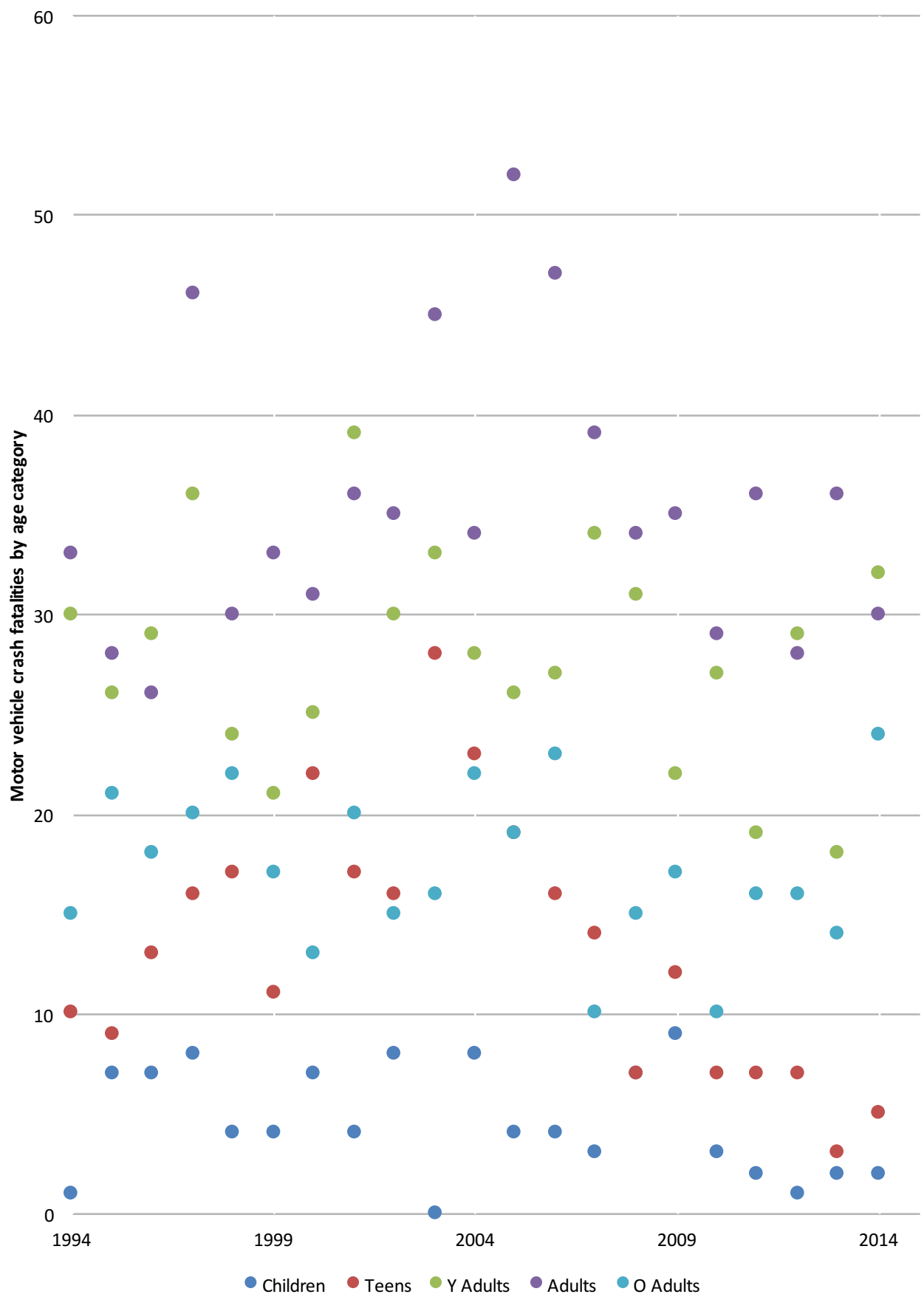


Motor Vehicle Occupant and Motorcyclist Fatalities by Age Group, 1994 - 2014 - State : Delaware
<http://www.fars.nhtsa.dot.gov/Trends/TrendsOccupants.aspx>

Year	< 5	5 -- 9	10 -- 15	16 -- 20	21 -- 24	25 -- 34	35 -- 44
1994	0	0	1	10	8	22	14
1995	1	2	4	9	9	17	16
1996	3	1	3	13	7	22	16
1997	2	1	5	16	12	24	24
1998	0	3	1	17	7	17	13
1999	0	2	2	11	10	11	18
2000	1	0	6	22	12	13	22
2001	1	1	2	17	9	30	14
2002	3	2	3	16	12	18	18
2003	0	0	0	28	18	15	15
2004	2	1	5	23	9	19	18
2005	1	0	3	19	14	12	20
2006	3	0	1	16	9	18	25
2007	1	1	1	14	14	20	17
2008	3	3	1	7	11	20	20
2009	1	4	4	12	9	13	14
2010	0	1	2	7	11	16	11
2011	1	1	0	7	7	12	15
2012	1	0	0	7	4	25	8
2013	1	1	0	3	8	10	15
2014	0	0	2	5	12	20	7

45 -- 54	55 -- 64	65 -- 74	> 74	Unknown	Total	Year	Children
12	7	7	8	0	89	1994	1
7	5	10	11	0	91	1995	7
4	6	10	8	0	93	1996	7
13	9	11	9	0	126	1997	8
9	8	9	13	0	97	1998	4
9	6	7	10	0	86	1999	4
8	1	5	8	0	98	2000	7
16	6	9	11	0	116	2001	4
9	8	6	9	0	104	2002	8
24	6	9	7	0	122	2003	0
10	6	6	16	0	115	2004	8
22	10	8	11	0	120	2005	4
15	7	9	14	0	117	2006	4
13	9	6	4	0	100	2007	3
10	4	5	10	0	94	2008	7
16	5	9	8	0	95	2009	9
11	7	2	8	0	76	2010	3
13	8	4	12	0	80	2011	2
16	4	6	10	0	81	2012	1
10	11	5	9	0	73	2013	2
13	10	10	14	0	93	2014	2

Teens	Y Adults	Adults	O Adults	
	10	30	33	15
	9	26	28	21
	13	29	26	18
	16	36	46	20
	17	24	30	22
	11	21	33	17
	22	25	31	13
	17	39	36	20
	16	30	35	15
	28	33	45	16
	23	28	34	22
	19	26	52	19
	16	27	47	23
	14	34	39	10
	7	31	34	15
	12	22	35	17
	7	27	29	10
	7	19	36	16
	7	29	28	16
	3	18	36	14
	5	32	30	24



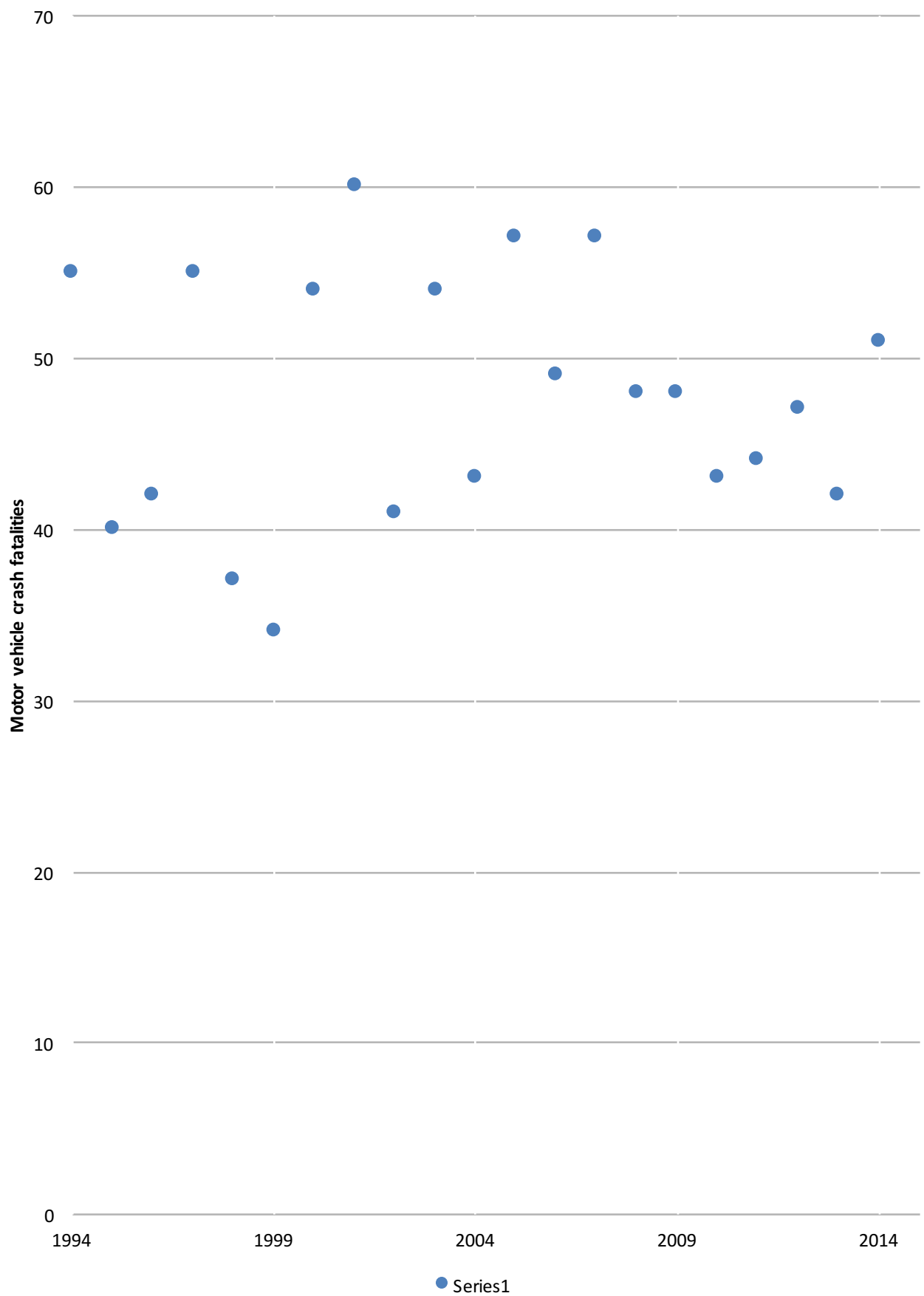
Persons Killed, by Highest Driver Blood Alcohol Concentration (BAC) in the Crash, 1994
<http://www-fars.nhtsa.dot.gov/Trends/TrendsAlcohol.aspx>

Year	BAC = .00		BAC = .01--.07		BAC = .08+		Total	
	Number	Percent	Number	Percent	Number	Percent		
1994	57	51	10	9	45	40	112	
1995	81	67	7	5	34	28	121	
1996	74	64	10	9	32	27	116	
1997	85	59	14	10	41	29	143	
1998	78	68	5	4	32	28	115	
1999	66	66	4	4	30	30	100	
2000	69	56	10	8	44	36	123	
2001	76	56	8	6	52	38	136	
2002	83	67	7	6	33	27	124	
2003	88	62	9	6	46	32	142	
2004	91	68	4	3	39	29	134	
2005	76	57	6	5	51	39	133	
2006	99	67	6	4	43	29	148	
2007	60	51	10	8	47	41	117	
2008	73	60	4	3	44	36	121	
2009	68	59	3	3	45	39	116	
2010	58	57	6	6	37	37	101	
2011	55	55	3	3	41	41	99	
2012	67	59	12	10	35	31	114	
2013	57	58	4	4	37	38	99	
2014	70	58	3	2	49	40	121	

Crash, 1994 - 2014 - State: Delaware

Total Fatalities in Alcohol--Related Crashes

Number	Percent
55	49
40	33
42	36
55	39
37	32
34	34
54	44
60	44
41	33
54	38
43	32
57	43
49	33
57	49
48	40
48	41
43	43
44	45
47	41
42	42
51	42

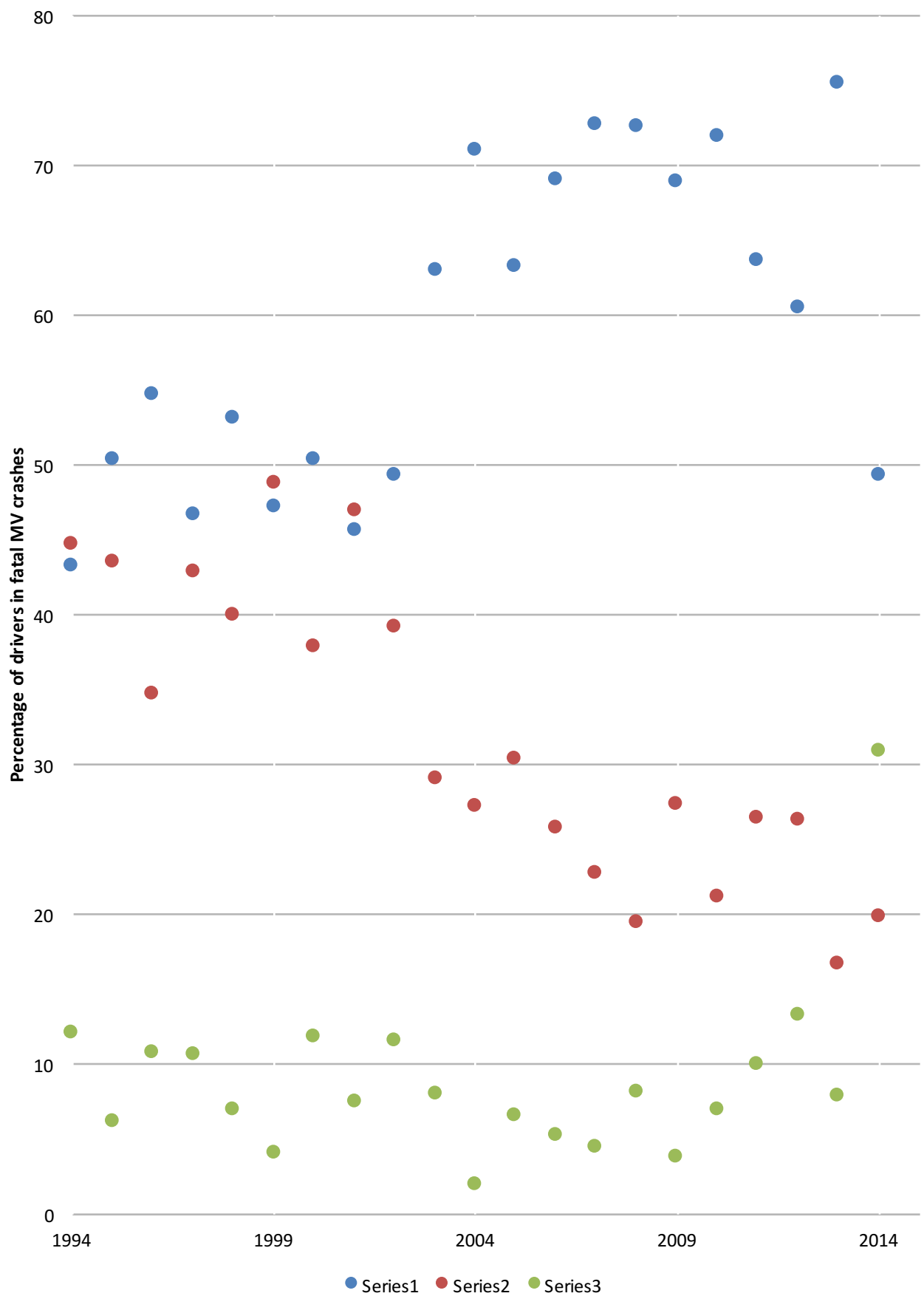


Drivers of Passenger Cars and Light Trucks in Fatal Crashes by Restraint Use,1994-2014 - State : Delawa
<http://www-fars.nhtsa.dot.gov/Trends/TrendsRestraints.aspx>

Year	Restraint Used		Restraint Not Used		Restraint Use Unknown	
	Number	Percent	Number	Percent	Number	Percent
1994	61	43.3	63	44.7	17	12.1
1995	74	50.3	64	43.5	9	6.1
1996	82	54.7	52	34.7	16	10.7
1997	75	46.6	69	42.9	17	10.6
1998	76	53.1	57	39.9	10	7
1999	59	47.2	61	48.8	5	4
2000	77	50.3	58	37.9	18	11.8
2001	73	45.6	75	46.9	12	7.5
2002	73	49.3	58	39.2	17	11.5
2003	126	63	58	29	16	8
2004	115	71	44	27.2	3	1.9
2005	96	63.2	46	30.3	10	6.6
2006	118	69	44	25.7	9	5.3
2007	96	72.7	30	22.7	6	4.5
2008	90	72.6	24	19.4	10	8.1
2009	91	68.9	36	27.3	5	3.8
2010	82	71.9	24	21.1	8	7
2011	70	63.6	29	26.4	11	10
2012	69	60.5	30	26.3	15	13.2
2013	86	75.4	19	16.7	9	7.9
2014	67	49.3	27	19.9	42	30.9

ce : Delaware

Total	
Number	Percent
141	100
147	100
150	100
161	100
143	100
125	100
153	100
160	100
148	100
200	100
162	100
152	100
171	100
132	100
124	100
132	100
114	100
110	100
114	100
114	100
136	100



Persons Killed in Crashes by Weather Condition and Light Condition - State : Delaware, Year : 2014
<http://www.fars.nhtsa.dot.gov/People/PeopleAllVictims.aspx>

Weather Condition	Light Condition					Total
	Day Light	Dark, but Lighted	Dark	Dawn or Dusk	Unknown	
Normal	44	13	44	1	1	103
Rain	2	1	7	1	0	11
Snow/Sleet	1	1	1	0	0	3
Other	2	0	1	0	0	3
Unknown	1	0	0	0	0	1
Total	50	15	53	2	1	121

Persons Killed in Crashes by Weather Condition and Light Condition - State : Delaware, Year : 2013

Weather Condition	Light Condition					Total
	Day Light	Dark, but Lighted	Dark	Dawn or Dusk	Unknown	
Normal	45	8	35	2	0	90
Rain	3	0	3	0	0	6
Snow/Sleet	0	1	1	0	0	2
Other	0	0	0	0	0	0
Unknown	0	0	0	0	1	1
Total	48	9	39	2	1	99

Persons Killed in Crashes by Weather Condition and Light Condition - State : Delaware, Year : 2012

Weather Condition	Light Condition					Total
	Day Light	Dark, but Lighted	Dark	Dawn or Dusk	Unknown	
Normal	39	13	50	1	0	103
Rain	1	4	2	0	0	7
Snow/Sleet	1	0	2	0	0	3
Other	0	1	0	0	0	1
Unknown	0	0	0	0	0	0
Total	41	18	54	1	0	114

Persons Killed in Crashes by Weather Condition and Light Condition - State : Delaware, Year : 2011

Weather Condition	Light Condition					Total
	Day Light	Dark, but Lighted	Dark	Dawn or Dusk	Unknown	
Normal	37	12	33	2	0	84
Rain	5	2	5	0	0	12
Snow/Sleet	1	0	0	0	0	1

Other	2	0	0	0	0	2
Unknown	0	0	0	0	0	0
Total	45	14	38	2	0	99

Year : 2014

85%

Year : 2013

91%

Year : 2012

90%

Year : 2011

85%

Traffic Deaths

http://ohs.delaware.gov/fatal_crash_index.shtml

Statistics on left side of page are for 2015 from Jan 1 - May 1, 2015

Statistics on right side of page are for 2016 from Jan 1 - May 1, 2016

	2015	2016	share of tota	share of total 2016
Total	32	43		
Alcohol Related	22	8	69%	19%
Vehicle Occupants	17	35		
Seat Belts Worn	7	16	41%	46%
Seat Belts Not Used	8	13	47%	37%
Seat Belt Use Unknown	2	6		
Motorcyclists	3	1		
Pedestrians	11	7		
Bicyclists	0	0		

Traffic statistical information is from CARS and fatal notice analysis.